



## Standard (Wired) Modem Setup

### Before you start:

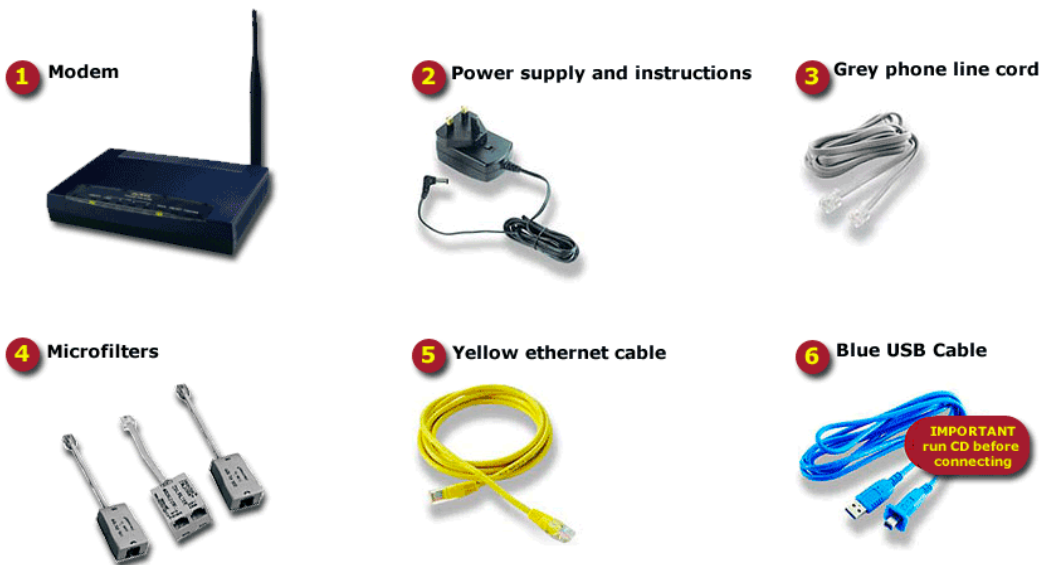
Please have your Perlico username and password ready. You should have received these in your welcome letter (note that passwords are case sensitive).

**Turn Off** all security software during installation, e.g. firewall, antivirus programs

**Close Down** all other applications, e.g. email, web browser, word processor

### Step 1

Check your pack contents. You should have all the following, plus a Perlico CD, and may include other software CDs:



### Step 2

Connect the cables as follows:

Plug the grey cable into the modem and into the microfilter, and then plug the microfilter into your telephone socket.

Connect the black power cable into the modem and into the power supply.  
Select the on switch at the back of the modem to turn it on.

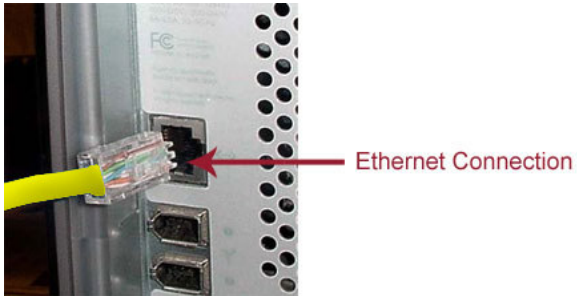
### Step 3

Decide which connection you wish to use:

Recommended option: LAN/Ethernet/Yellow Connection (go to Step 4 to continue)

Other option: USB/Blue connection (go to Step 4A to continue)

### Step 4 – Connecting via Ethernet



Note: Please ensure that both the modem and your computer are turned on and booted up.

Plug one end of the **yellow Ethernet cable** into the yellow socket on the modem.

Plug the other end of the yellow Ethernet cable into the Ethernet socket on the rear of your computer.



## Step 5

Confirm that the 10/100 light on the front of your modem has now switched on (note: this might take a couple of minutes. The power and DSL lights will also be on).

If the 10/100 light on the front of your modem has now switched on, go to Step 6.

If the power light has not come on, ensure that your modem has been switched on. If the DSL light has not come on, check that the grey cable is connected to the modem, the microfilter and the phone line (as per Step 1). If the 10/100 light has not come on, contact our Customer Service team on 1890 38 38 38.

## Step 6

Open your browser (by default, click the Start button on your computer, select Programs > Internet Explorer)

## Step 7

The following screen should appear prompting you for information:



**DSL Connection Successful**

Your router has established a DSL connection to your local exchange. To log on to the Internet, the router needs the Internet user name and password provided by your ISP.

Enter your details below and click the Log On button [\[Instructions\]](#)

Router Configuration Password

User Name

Password

Enter 1234 in the Router Configuration Password field.

Enter the username and password you received in your welcome letter from Perlico. If you no longer have these details, contact Customer Services on 1890 38 38 38, and they will be able to advise you of these details.

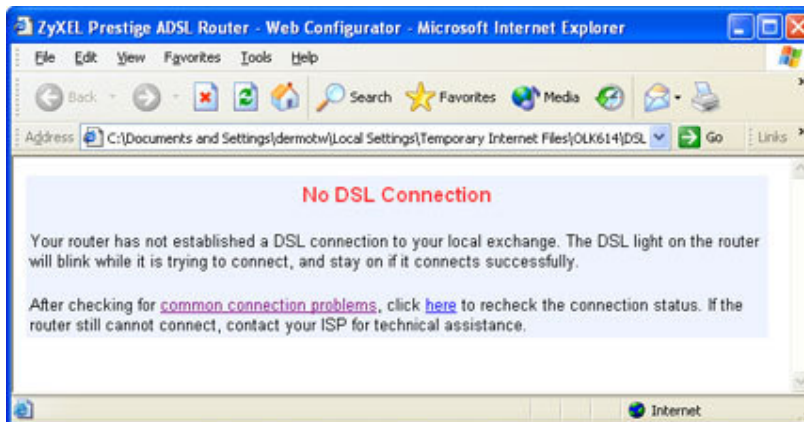
Click "Log on to the Internet".

## Step 8

Setup should now be complete, and you should see a congratulations message, which closes down after 1 minute. You are now connected to the internet.



You may be presented with the following page if there has been an error during your setup:



There are several reasons why you may be presented with this page:

- Faulty DSL Filter: Connect the grey phone cable directly from the DSL modem socket to the wall socket. If the DSL light does not come on, or is blinking, go back to Step 6.
- Poor quality internal phone cabling, or too many devices connected to the line can affect the DSL signal. If your Modem has no DSL connection try unplugging all phones etc. (including the modem) connected to the line. Wait for 30 minutes, which will reset the DSL signal. Connect the modem only to the line and retry. If that does not work try connecting it to the main phone socket. If the DSL light does not come on or is blinking go back to Step 6.
- If you have equipment connected directly to your phone line, such as a monitored alarm or a PABX, it will also require shielding from ADSL signals. A DSL splitter will need to be installed by a certified engineer for this, your Alarm provider can arrange this for you. Also, if you have more

than four telephone devices on your line, you may require additional Microfilters, which can be purchased from any computer store.

If the DSL light still does not come on contact our Customer Service team on 1890 38 38 38.

The following items should be left in the box as they are not required to connect to the Internet using the yellow (Ethernet) cable): Blue (USB) cable, 2 x Microfilters, software CDs if they were included in the box originally.

#### **Step 4A – Connecting via USB**

You will only need to connect to the Internet using the blue (USB cable) if there is no connection on your computer for the yellow (Ethernet) cable.

Place the CD you received into the CD drive on your computer.

When the following screen appears, select SETUP



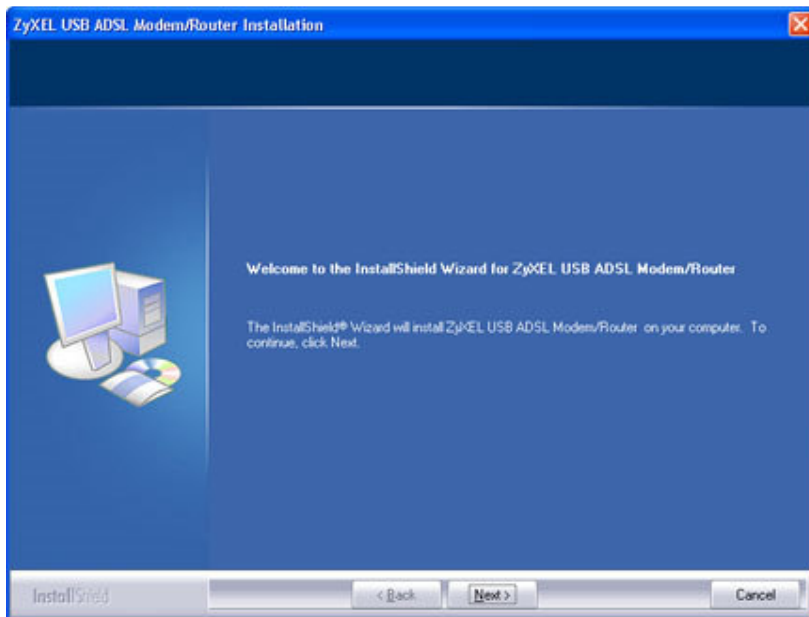
#### **Step 5A**

Choose the appropriate operating system (if your operating system is not listed, return to **Step 4 – via Ethernet connection**)



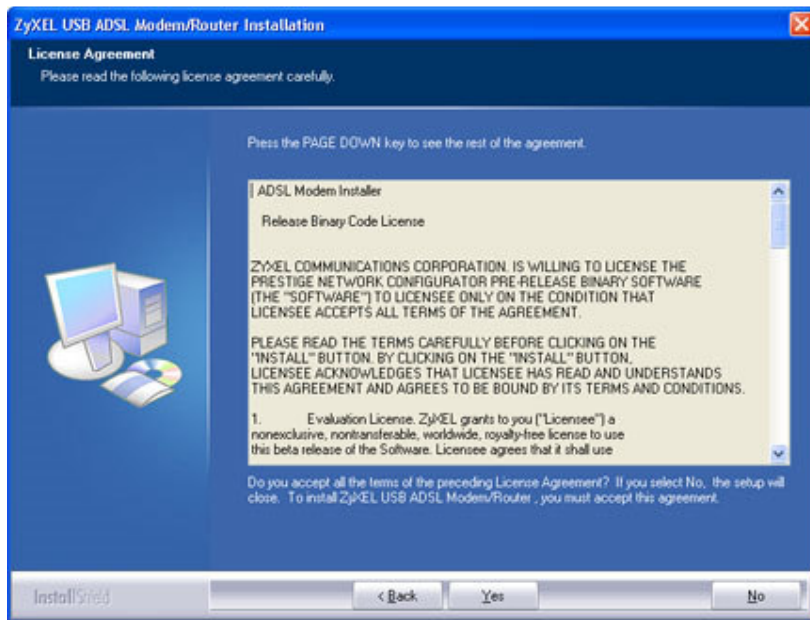
### Step 6A

The following screen should now appear:  
Click **Next**



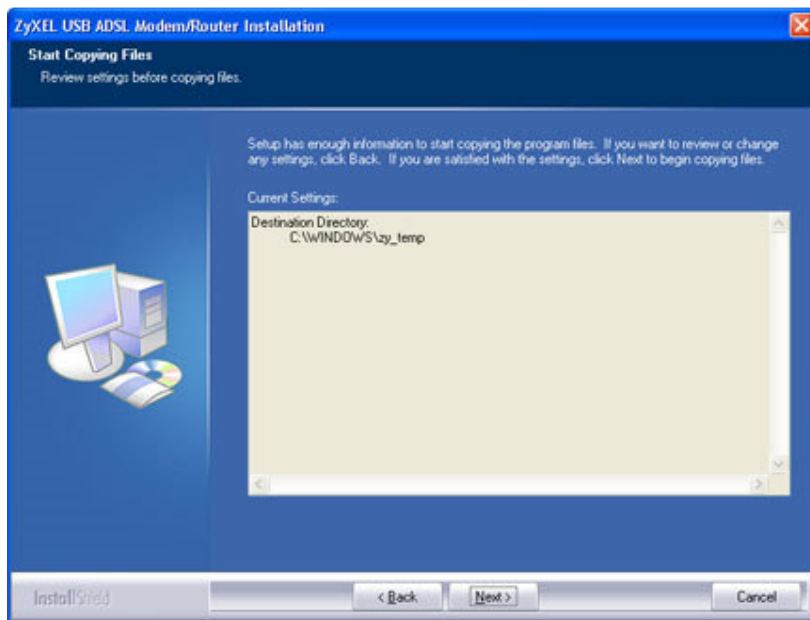
### Step 7A

When the following screen appears, click **Yes**



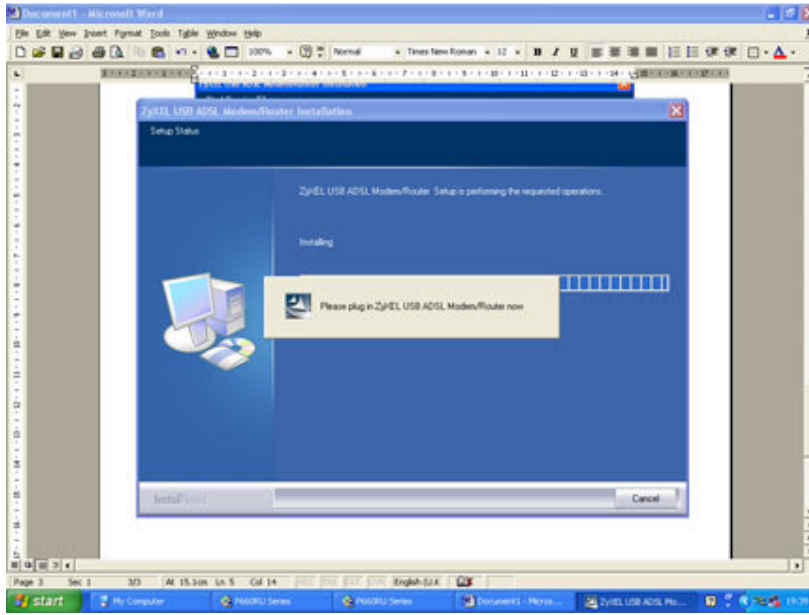
## Step 8A

Click **Next** on this screen once it appears:



## Step 9A

When the page below appears, plug the USB (blue) cable into both the modem and PC as per instructions below.



During the installation process you will be prompted to connect the blue USB cable into the modem. Plug the square end of the blue USB cable into your modem's blue USB socket.

Plug the other end of the blue USB cable into a free USB socket on your computer.



### **Step 10A**

Click Finish to complete the installation.

When your connection has been successfully set up, you should see the light on your modem. If this light is not on, or is blinking, please contact our Customer Service team on 1890 38 38 38.

### **Step 11A**

Open your browser (by default, click the Start button on your computer, select Programs > Internet Explorer). You should now fully set up to access the internet.